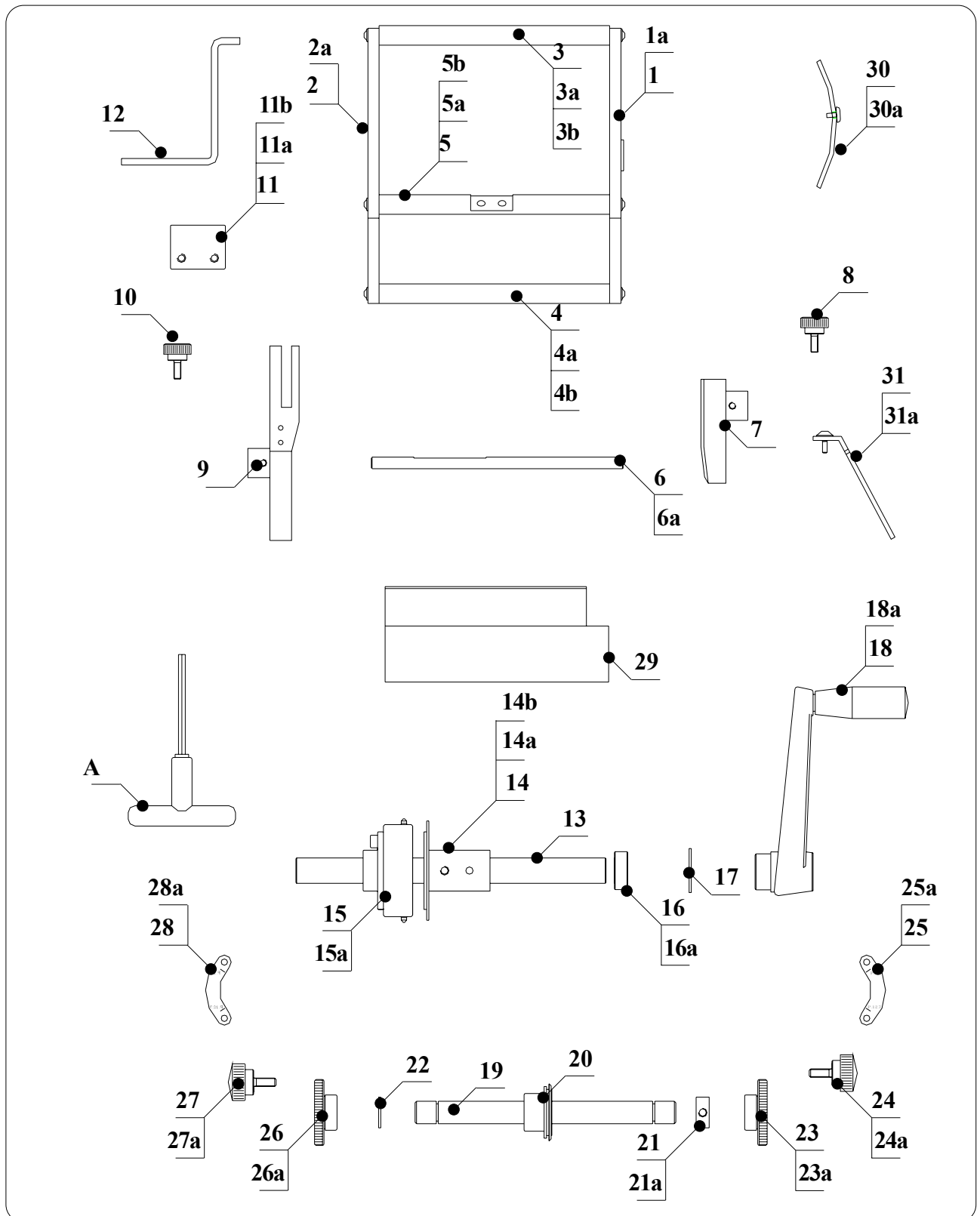


# - 11 - SPARE PARTS

## 11.1 WARNING FOR THE CUSTOMER

Before ordering any particular spare part, it is always necessary to specify the serial number of the machine to which the part shall fit.

## 11.2 DETAILED DRAWING OF MACHINE CODE 31.OL21 TP6/R/21/EC MANUAL CUTTING MACHINE TAPED RADIAL COMPONENTSP.12,7



## 11.2.1 READING KEY FOR DETAILED DRAWING(31.OL21) TP6/R/EC MANUAL CUTTING MACHINE FOR TAPED RAD.COMPONENTS P=12,7

POS.	ITEM	DESCRIPTION	Q.TY
1	310101	RIGHT SIDEPLATE	1
1A	400111	CENTRAL BUSHING F18/22/12 FOR MAIN SHAFT	1
2	310102	LEFT SIDEPLATE	1
2A	400111	CENTRAL BUSHING F18/22/12 FOR MAIN SHAFT	1
3	230103	MAIN HOLDING SHAFT	1
3A	550012	BH SCREW M5X15	2
3B	750505	BLUED WASHER HOLE Ø6	2
4	230106	MAIN SHAFT LOCK IN MACHINE'S BODY	2
4A	550012	BH SCREW M5X15	4
4B	750505	BLUED WASHER HOLE Ø6	4
5	230104	SHAFT FOR COMPONENT UNLOADER	1
5A	550012	BH SCREW M5X15	2
5B	750505	BLUED WASHER HOLE Ø6	2
6	300206	GUIDE HOLDING SHAFT FOR TP6/R	1
6A	750301	SCREW TSEI M5X12	1
7	300210	RIGHT TAPE GUIDE FOR TP6/R	1
8	400210	KNOB M5X16	1
9	300211	LEFT TAPE GUIDE P. 12.7 FOR TP6/R	1
10	400210	KNOB M5X16	1
11	300104	TAPE UNLOADER HOLDER TP6/R	1
11A	750107	SCREW TCEI M4X12	2
11B	750255	CP SET SCREW M6X8	1
12	300103	TAPE UNLOADER	1
13	400401	MAIN SHAFT	1
14	300905	TOOTHED DISC P. 12,7 FOR MODEL 30.OL11	1
14A	400304	SCREW PT M6X8	1
14B	770055	PARALLEL PIN D. 5X8	1
15	300906	DRIVING WHEEL P=12,7 FOR MODEL 30.OL11	1
15A	300904	SCREW PT M6X16 FOR DRIVING WHEEL	1
16	310103	FIXING RING DIN 705	1
16A	400304	SCREW PT M6X8	1
17	400415	CLIP RS 15 DIN 6799	1
18	400301	HAND CRANK	1
18A	400305	SCREW PP M6X10	1
19	400504	CUTTING SHAFT	1
20	400710	CUTTING WHEEL SP. 1,5	1
21	420028	RING FOR BENDING SHAFT	1
21A	400413	SCREW PP M6X5	1
22	400503	CLIP RS 12 DIN 6799	1
23	400703	RIGHT ECCENTRIC BUSHING/BENDING ADJ.	1
23A	400904	GLYCODUR BUSHING TFP D1=16	1
24	400501	KNOB M6X16	1
24A	750505	BLUED WASHER HOLE Ø6	1
25	300909	RIGHT CUTTING INDEX P= 12,7-15 TP6/R	1
25A	600050	SCREW TBEI M4X6	2
26	400704	LEFT ECCENTRIC BUSHING/BENDING ADJ.	1
26A	400904	GLYCODUR BUSHING TFP D1=16	1
27	400501	KNOB M6X16	1
27A	750505	BLUED WASHER HOLE Ø6	1



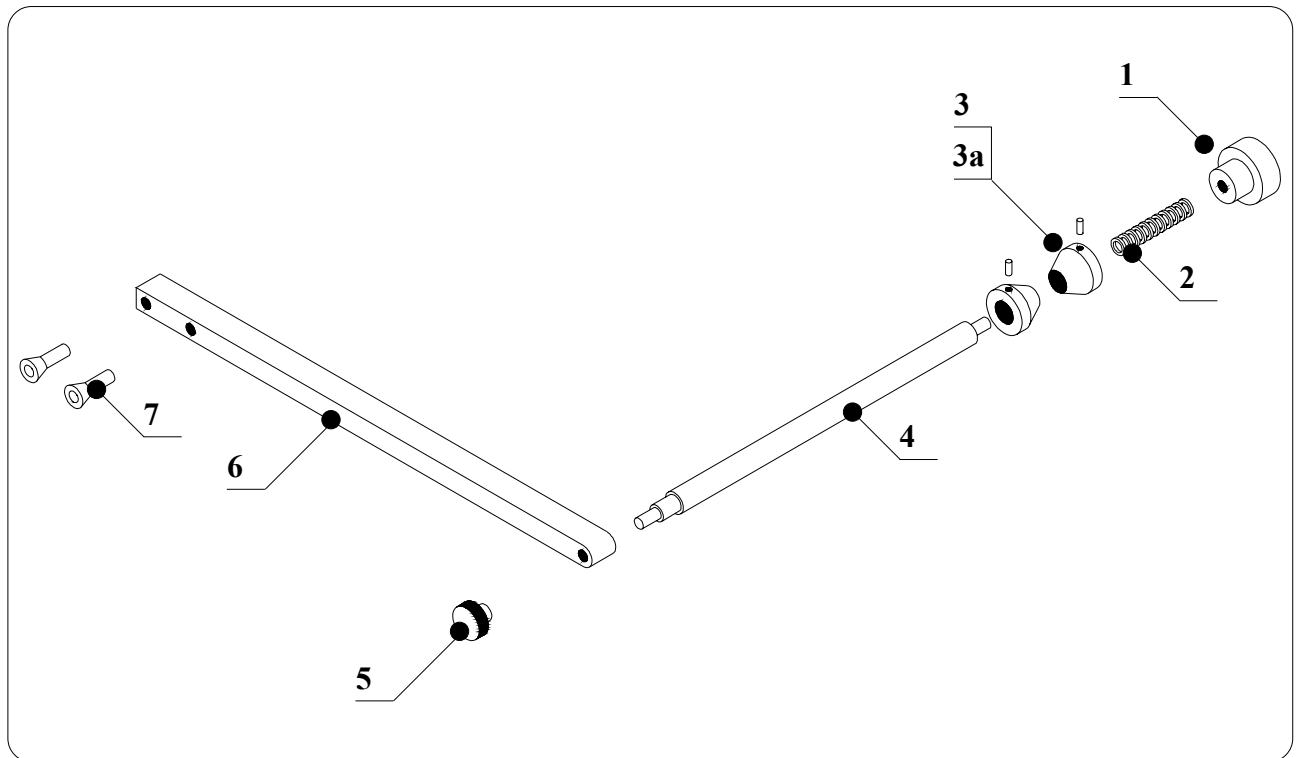
POS.	ITEM	DESCRIPTION	Q.TY
28	300910	LEFT CUTTING INDEX P= 12,7-15 TP6/R	1
28A	600050	SCREW TBEI M4X6	2
29	230105	PART BIN FOR TP6/EC	1
30	310104	BACK SAFETY COVER FOR TP6/R-EC	1
30A	400114	BH SCREW M4X8	2
31	230120	SAFETY COVER	1
31A	400109	SAFETY COVER PIN	2
<b>ADJUSTMENTS TOOLSET</b>			
A	400804	ALLEN KEY MM. 3	1

**ANOTHER VERSIONS**

**31.OL22 TP6/R/12/EC MAN.CUTTING MACH.TAPED RADIAL COMP. P.15**

9	300212	LEFT TAPE GUIDE P. 15 FOR TP6/R	1
14	300907	TOOTHED DISC P. 15 FOR MOD. 30.OL12	1
15	300908	DRIVING WHEEL P. 15 FOR MOD. 30.OL12	1

### 11.3 DETAILED DRAWING OF REEL HOLDER BR6 REEL HOLDER FOR TAPED COMPONENTS CODE 400200



#### 11.3.1 READING KEY FOR DETAILED DRAWING OF BR6 REEL HOLDER FOR TAPED COMPONENTS CODE 400200

POS.	ITEM	DESCRIPTION	Q.TY
1	400206	KNOB M 12	1
2	400204	SPRING	1
3	400203	CENTERING CONE	2
3A	210119	SCREW PP M 6X12	2
4	400201	REEL HOLDER	1
5	400205	KNOB M 8	1
6	400202	BAR FOR REELHOLDER	1
7	400212	SCREW TSEI M 5X20	2