

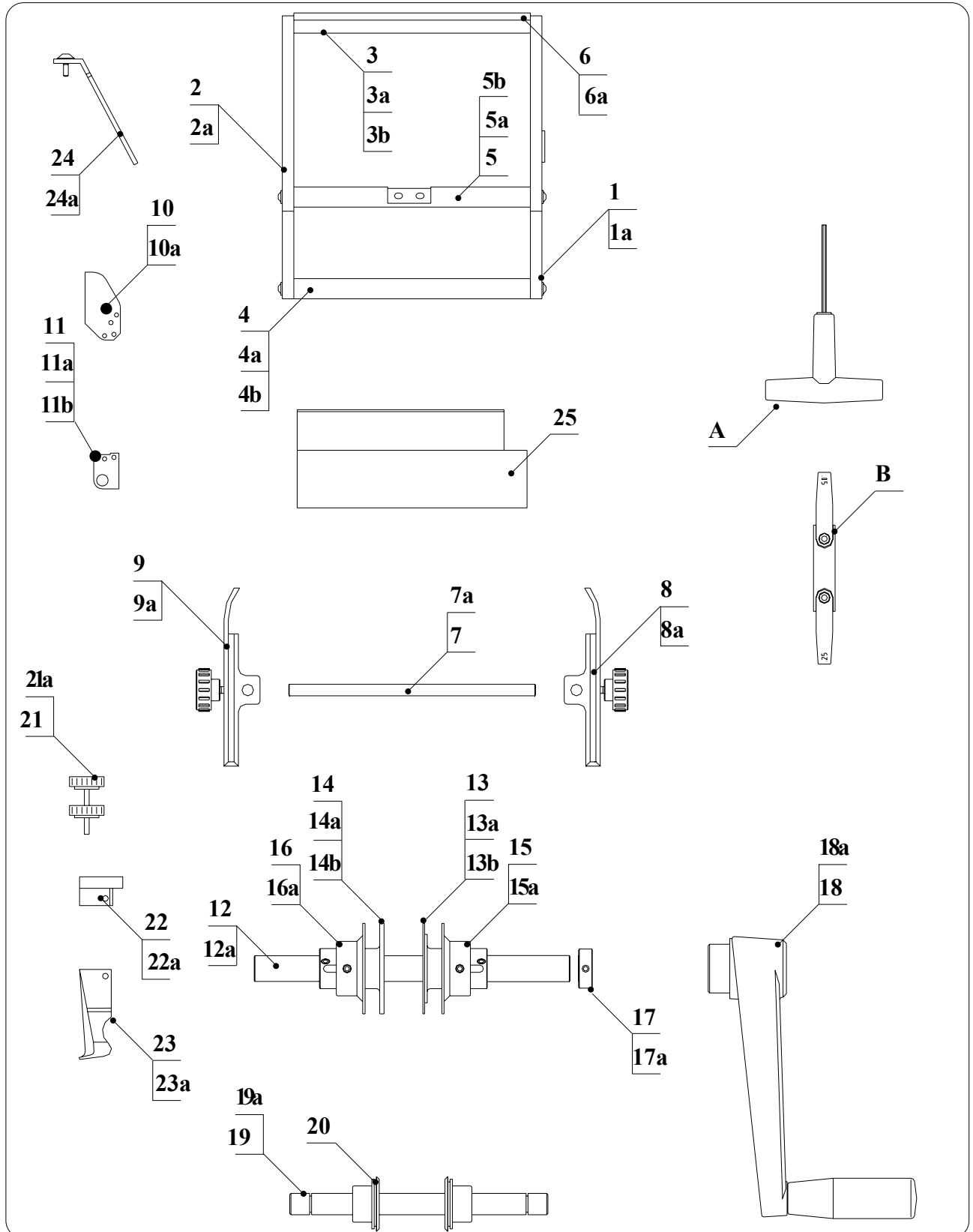
# - 11 - SPARE PARTS

## 11.1 WARNING FOR THE CUSTOMER

Before ordering any particular spare part, it is always necessary to specify the serial number of the machine to which the part shall fit.

## 11.2 DETAILED DRAWING MACHINE 81.OL01 TP6/V/EC PREFORM.

VERT.LEAD Ø 0,5-0,8 P=2,54 A=1,8



## 11.2.1 READING KEY FOR DETAILED DRAWING(81.OL01) TP6/V/EC PREFORM. VERT.LEAD D. 0,5-0,8 P=2,54 A=1,8

Pos.	Item	Description	Q.ty
1	810101	RIGHT MACHINE'S BODY	1
1A	400111	CENTRAL BUSHING F 18/22/12	1
2	810102	RIGHT MACHINE'S BODY	1
2A	400111	CENTRAL BUSHING F 18/22/12	1
3	230103	SHAFT	1
3A	750302	SCREW TBEIM 5X20	2
3B	600037	FLAT BLUED WASHER D. 6	2
4	230106	SHAFT	1
4A	750302	SCREW TBEIM 5X20	4
4B	600037	FLAT BLUED WASHER D. 6	4
5	230104	SHAFT	1
5A	750302	SCREW TBEIM 5X20	2
5B	600037	FLAT BLUED WASHER D. 6	2
6	810103	PLATE	1
6A	750107	SCREW TCEIM 4X12	4
7	400207	GUIDE HOLDING SHAFT	1
7A	400214	SCREW TSM 5X16	1
8	200201	RIGHT TAPE GUIDE	1
8A	400210	KNOB M 5X16	1
9	800201	LEFT TAPE GUIDE TP6/V	1
9A	400210	KNOB M 5X16	1
10	860011	COMPONENT UNLOADER TP6V/V-PR 1MM THICK	1
10A	400117	SCREW TCEIM 4X10	1
11	860010	COMPONENT UNLOADER HOLDER RIGHT/LEFT TP6V/V-PR	1
11A	400341	SCREW TCEIM 3X10	2
11B	400116 INOX	M3 CAP NUT INOX	2
12	400401	MAIN SHAFT	1
12A	400415	RADIAL CLIP RS 15 DIN 6799	1
13	800406	RIGHT INNER TOOTHED DISC	1
13A	400304	SCREW PT M 6X8	1
13B	400429	NEEDLE Ø 5X9	1
14	800402	LEFT INNER TOOTHED DISC	1
14A	400304	SCREW PT M 6X8	1
14B	400429	NEEDLE Ø 5X9	1
15	200402	RIGHT OUTER TOOTHED DISC	1
15A	400413	SCREW PPM 6X5 UNBRAKO	1
16	200401	LEFT OUTER TOOTHED DISC	1
16A	400413	SCREW PPM 6X5 UNBRAKO	1
17	310103	FIXING RING DIN 705	1
17A	400304	SCREW PT M 6X8	1
18	400301	HANDLE ELESA	1
18A	400305	SCREW PPM 6X10 UNBRAKO	1
19	200501	CUTTING SHAFT	1
19A	40053	RADIAL CLIP RS 12 DIN 6799	2
20	400710	CUTTING WHEEL	2
21	800609	BENDING CAMME REGISTER	1
21A	800611	SCREW TBEIM 6X30	1
22	800601	BENDING CAMME SUPPORT	1
22A	780008	SCREW TCEIM 5X12	4
23	800603	BENDING CAMME	1
23A	800606	PARALLEL PIN Ø 4X20	1
24	230120	SAFETY COVER	1
24A	400109	SAFETY COVER PIN	1
25	230105	PART BIN FOR TP6/EC	
<b>ADJUSTMENT TOOLSET</b>			
A	400804	ALLEN KEY	1
B	800705	THICKNESS GAUGED. 0.5-0.8	1

**ANOTHERMACHINES**

**81.OL03 TP6/V/EC PREFORM. VERT. LEAD D. 0,5-0,8 P=3,8**

23	800604	BENDING CAM P. 3.8	1
----	--------	--------------------	---

**81.OL04 TP6/V/EC PREFORM. VERT. LEAD D. 0,5-0,8 P=5,08**

23	800605	BENDING CAM P. 5.08	1
----	--------	---------------------	---

**81.OL05 TP6/V/EC PREFORM. VERT. LEAD D. 0,5-0,8 P=7,5**

23	800610	BENDING CAM P. 7.5 Ø 0,5-0,8	1
----	--------	------------------------------	---

**81.OL21 TP6/V/EC PREFORM. VERT. LEAD D. 0,8-1,3 P=3,8**

10	860012	COMPONENT UNLOADER V/V-PR 2mm THICK	1
----	--------	-------------------------------------	---

13	800405	RIGHT INNER TOOTHED DISC /V D. 0.8-1.3	1
----	--------	--	---

14	800404	LEFT INNER TOOTHED DISC /V D. 0.8-1.3	1
----	--------	---------------------------------------	---

20	800407	LEFT CUTTING WHEEL FOR TP6/V	1
----	--------	------------------------------	---

23	800612	BENDING CAM PITCH 3,8 H=2,2 LEADS Ø 0,8/1,3	1
----	--------	---	---

*ADJUSTMENT TOOLSET*

A	800706	THICKNESS GAUGE D. 0.8-1.3	1
---	--------	----------------------------	---

**81.OL22 TP6/V/EC PREFORM. VERT. LEAD D. 0,8-1,3 P=5,08**

10	860012	COMPONENT UNLOADER V/V-PR 2mm THICK	1
----	--------	-------------------------------------	---

13	800405	RIGHT INNER TOOTHED DISC /V D. 0.8-1.3	1
----	--------	--	---

14	800404	LEFT INNER TOOTHED DISC /V D. 0.8-1.3	1
----	--------	---------------------------------------	---

20	800407	LEFT CUTTING WHEEL FOR TP6/V	1
----	--------	------------------------------	---

23	800613	BENDING CAM P. 5,08 H=2,2 LEADS Ø 0,8/1,3	1
----	--------	---	---

*ADJUSTMENT TOOLSET*

A	800706	THICKNESS GAUGE D. 0.8-1.3	1
---	--------	----------------------------	---

**81.OL23 TP6/V/EC PREFORM. VERT. LEAD D. 0,8-1,3 P=7,5**

10	860012	COMPONENT UNLOADER V/V-PR 2mm THICK	1
----	--------	-------------------------------------	---

13	800405	RIGHT INNER TOOTHED DISC /V D. 0.8-1.3	1
----	--------	--	---

14	800404	LEFT INNER TOOTHED DISC /V D. 0.8-1.3	1
----	--------	---------------------------------------	---

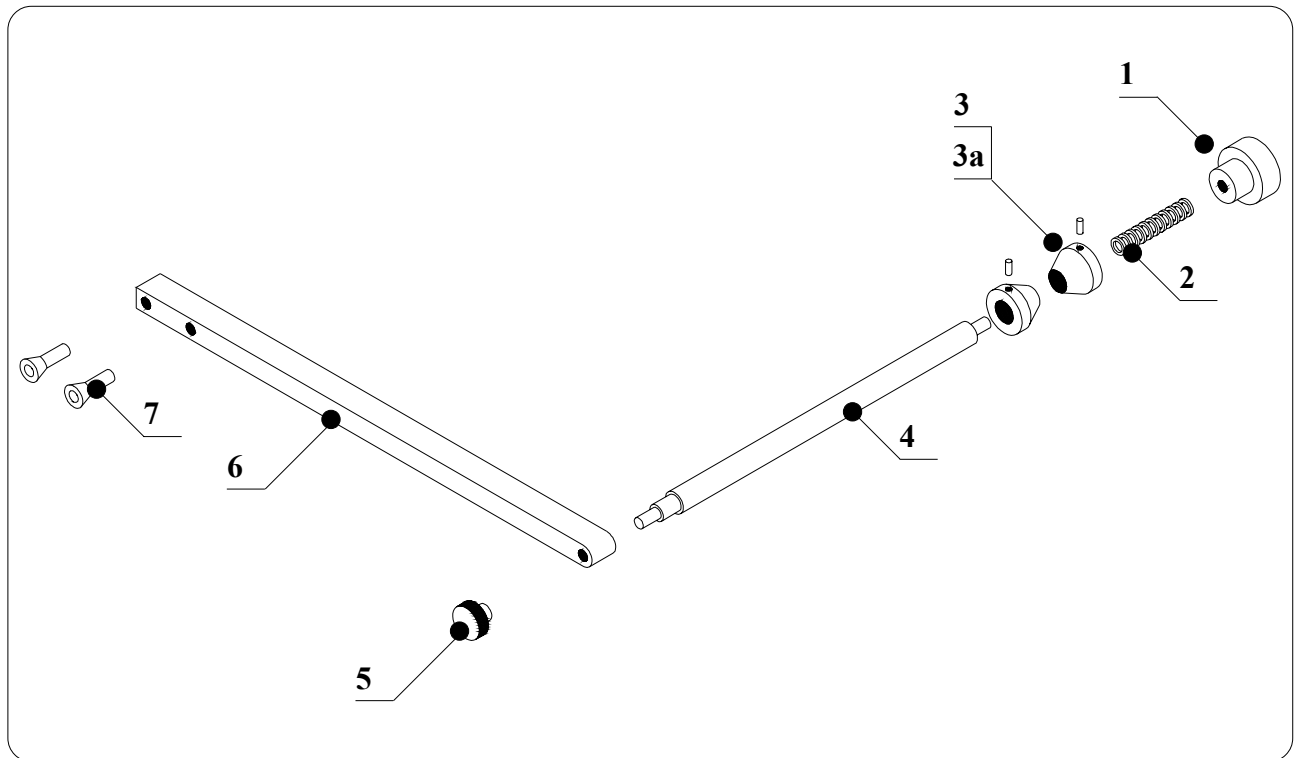
20	800407	LEFT CUTTING WHEEL FOR TP6/V	1
----	--------	------------------------------	---

23	800614	BENDING CAM P. 7,62 H=2,5 LEADS Ø 0,8/1,3	1
----	--------	---	---

*ADJUSTMENT TOOLSET*

A	800706	THICKNESS GAUGE D. 0.8-1.3	1
---	--------	----------------------------	---

### 11.3 DETAILED DRAWING OF REEL HOLDER BR6 REEL HOLDER FOR TAPED COMPONENTS CODE 400200



#### 11.5.1 READING KEY FOR DETAILED DRAWING OF BR6 REEL HOLDER FOR TAPED COMPONENTS CODE 400200

<i>Pos.</i>	<i>Item</i>	<i>Description</i>	<i>Q.ty</i>
1	400206	knob M 12	1
2	400204	spring	1
3	400203	centering cone	2
3a	210119	screw PP M 6x12	2
4	400201	reel holder	1
5	400205	knob M 8	1
6	400202	bar for reelholder	1
7	400212	screw TSEI M 5x20	2