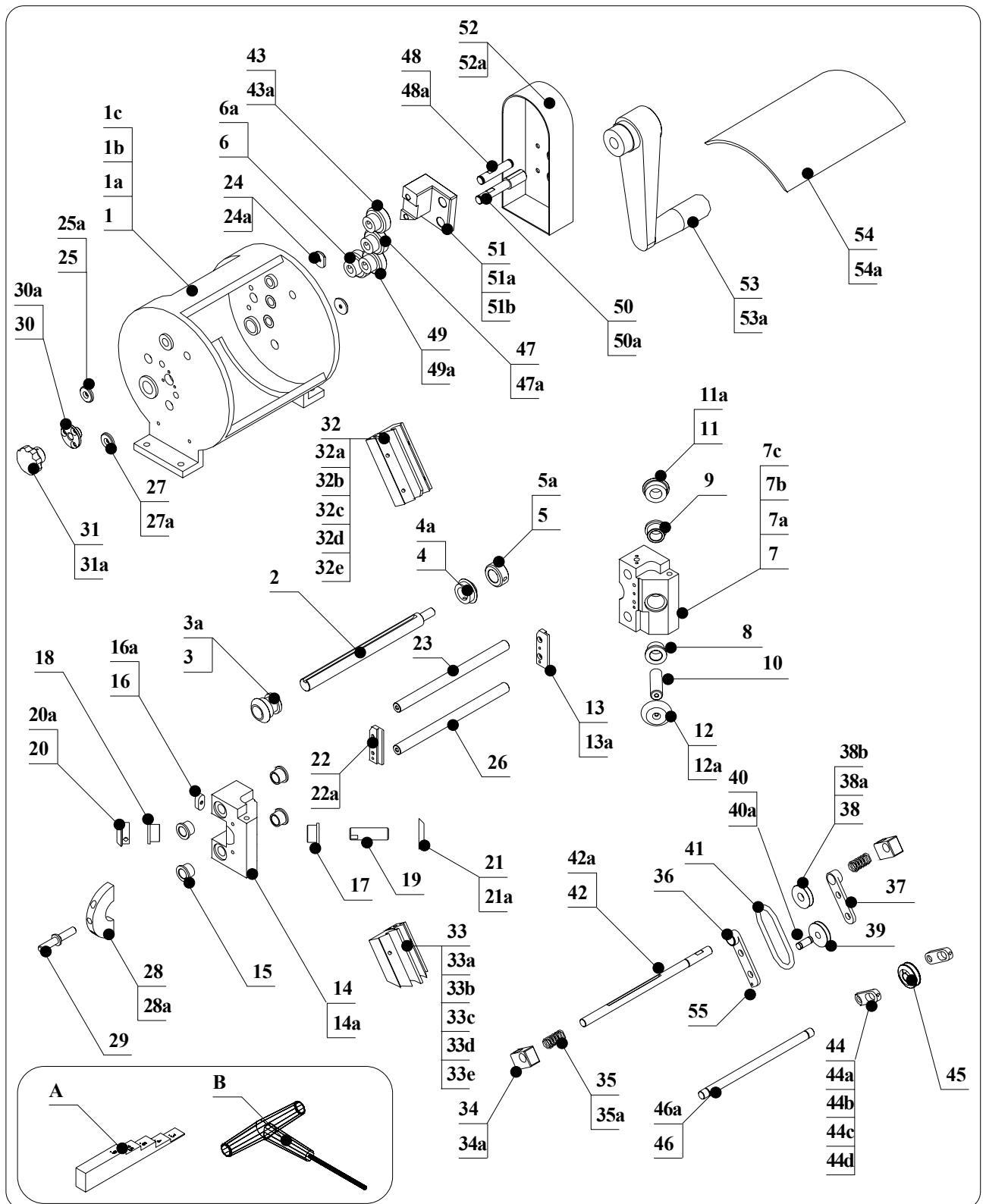


- 11 - SPARE PARTS

11.1 WARNING FOR THE CUSTOMER

Before ordering any particular spare part, it is always necessary to specify the serial number of the machine to which the part shall fit.

11.2 DETAILED DRAWING OF TP IC-F



11.2.1 READING KEY FOR DETAILED DRAWING TP IC-F cod. 77OL01

Pos.	Item	Description	Q.ty
1	770001OL	MACHINEBODY	1
1a	770002	BUSHING	2
1b	770005	BUSHING	2
1c	770004	BUSHING	2
2	770035	SHAFT FOR BEVEL GEAR PAIRS	1
3	770037	LEFT LOWER BEVEL GEAR	1
3a	400412	PARALLEL PIN D.5X6	1
4	770036	RIGHT LOWER BEVEL GEAR	1
4a	400304	SCREW PT M 6x8	1
5	420028	RING FOR BENDING SHAFT	1
5a	400304	SCREW PT M 6x8	1
6	770011	GEAR	1
6a	400413	SCREW PP M 6x5	1
7	770018	RIGHT PREFORMING ASSEMBLY	1
7a	850418	PARALLEL PIN D.3X12	6
7b	500063	ENSAT BUSHING M4/M6,5 L.8	2
8	770075	BUSHING	1
9	850102	BUSHING F14/20/14 FOR CAM	1
10	770027	HOLDING SHAFT FOR PREFORMING ROLLS	1
11	770029	UPPER BEVEL GEAR PAIR	1
11a	400413	SCREW PP M 6x10	1
12	770076	PREFORMING ROLL	1
12a	850108	SCREW TSEI M 4x10	1
13	770025	RIGHT COMPONENT GUIDE	1
13a	150210	REDUCED CAPSCREW M4X10	1
14	770019	LEFT PREFORMING ASSEMBLY	1
14a	850418	PARALLEL PIN D.3X12	2
15	770024	BUSHING FOR LEFT PREFORMING ASSEMBLY	4
16	770023	KEYWAY FOR LEFT PREFORMING ASSEMBLY MOVEMENT	1
16a	400117	SCREW TCEI M 4x10	1
17	770075	BUSHING	1
18	850102	BUSHING F14/20/14 FOR CAM SHAFT FOR TP6/V-PR	1
19	770027	HOLDING SHAFT FOR PREFORMING ROLLS	1
20	770029	UPPER BEVEL GEAR PAIR	1
20a	400413	SCREW PP M 6x5	1
21	770076	PREFORMING ROLL	1
21a	850108	SCREW TSEI M 4x10	1

22	770026	LEFT COMPONENT GUIDE	1
22a	150210	REDUCED CAPSCREW M4X10	1
23	770013	SHAFT FOR RT-LT BODY GUIDES	1
24	770014	WASHER FOR GUIDE SHAFT TRANSMISSION SIDE	1
24a	850108	SCREW TSEI M 4x10 Unbrako	1
25	770015	WASHER FOR GUIDE SHAFT LEFT SIDE	1
25a	850108	SCREW TSEI M 4x10 Unbrako	1
26	770013	SHAFT FOR RT-LT BODY GUIDES	1
27	770015	WASHER FOR GUIDE SHAFT LEFT SIDE	2
27a	850108	SCREW TSEI M 4x10 Unbrako	2
28	770017	FORK FOR ADJUSTMENT PIN	2
28a	VITC0420	SCREW TCEI M 4x20	2
29	770016	PIN FOR PITCH ADJUSTMENT	2
30	770003	BUSHING	1
30a	850108	SCREW TSEI M 4x8	3
31	400205	SMALL KNOB M8 FOR REELHOLDER	1
31a	-	SCREW PP M 4x20	1
32	770020	UPPER TUBE GUIDE P. 7,62	1
32a	770033	SPRING FOR LEFT STICK GUIDE	2
32b	770032	SPRING FOR RIGHT STICK GUIDE	2
32c	770034	UPPER STICK HOLDER	4
32d	VITB0410	SCREW TBEI M 4x10	4
32e	930071	SCREW TCEI M 4x30	1
32	770058	UPPER TUBE GUIDE P. 15,24	1
32a	770033	SPRING FOR LEFT STICK GUIDE	2
32b	770032	SPRING FOR RIGHT STICK GUIDE	2
32c	770034	UPPER STICK HOLDER	4
32d	VITB0410	SCREW TBEI M 4x10	4
32e	930071	SCREW TCEI M 4x30	1
33	770061	LOWER TUBE GUIDE P. 7,62	1
32a	770033	SPRING FOR LEFT STICK GUIDE	2
32b	770032	SPRING FOR RIGHT STICK GUIDE	2
32c	770034	UPPER STICK HOLDER	4
32d	VITB0410	SCREW TBEI M 4x10	4
32e	930071	SCREW TCEI M 4x30	1
32	770063	LOWER TUBE GUIDE P. 15,24	1
32a	770033	SPRING FOR LEFT STICK GUIDE	2
32b	770032	SPRING FOR RIGHT STICK GUIDE	2
32c	770034	UPPER STICK HOLDER	4
32d	VITB0410	SCREW TBEI M 4x10	4
32e	930071	SCREW TCEI M 4x30	1
34	770031	SPRING HOLDER	2
34a	950209	SCREW TCEI M 6x20	2
35	770050	SPRING FOR ROLLER DRIVE CENTERING COVER	2
35a	-	WASHER Ø 12	2
36	770056	LEFT PLATE FOR ROLLER DRIVE SHAFT	1
37	770040	PLATE FOR ROLLER DRIVE SHAFT	1

38	770047	MOTION DRIVING WHEEL	1
38a	770048	SCREW PP M 4x10	1
38b	770049	HOLDING BUSHING FOR MOTION WHEEL	2
39	770046	FREE DRIVING WHEEL	1
40	770042	PIN FOR DRIVING WHEEL	1
40a	770071	CLIP RS5 DIN 6799	2
41	770045	DRIVING BELT	1
42	770038	SHAFT FOR COMPONENT DRIVING	1
43	770011	GEAR	1
43a	400413	SCREW PP M 6x5	1
44	770044	SMALL PLATE -STOP- BELTTENSION	2
44a	770041	PLATE SPACER FOR ROLLER	1
44b	750105	SCREW TBEI M 5x6	2
44c	400117	SCREW TCEI M 4x10	2
44d	750108	NUT M 4	2
45	770043	BELT TENSION ADJUST. WHEEL	1
46	770039	SHAFT FOR BELT TENSION ADJUST.	1
46a	770069	ELASTIC RING RS9 DIN 6799	2
47	770011	GEAR	1
47a		SCREW PP M 6x10	1
48	770007	PIN FOR MINOR TRANSMISSION	1
48a	770069	ELASTIC RING RS9 DIN 6799	2
49	770011	GEAR	1
49a	400413	SCREW PP M 6x5	1
50	770006	PIN FOR HANDCRANK	1
50a	770069	ELASTIC RING RS9 DIN 6799	1
51	770008	BOX FOR MINOR TRANSMISSION PIN	1
51a	770009	SCREW TCEI M 6x40	2
51b	770010	BUSHING Glycodur Ø10 - Ø12 - H12	2
52	770051	COVER TP6/IC-F	1
52a		SCREW TBEI M 5x8	2
53	850601	HANDCRANK V-PR/ PR-F	1
53a	400305	SCREW PP M 6x10 Unbrako	
1			
54	400109	SAFETY COVER PIN	2
54a	400110	SAFETY COVER	1
ADJUSTMENT TOOLSET			
A	770053	THICKNESS GAUGE - PITCH REFERENCE	1
B	400804	ALLEN KEY mm. 3	1
PARTI SUPPLEMENTARI			
32	770057	UPPER STICK GUIDE P. 10,16	1
32	770059	UPPER STICK GUIDE P. 19,05	1
32	770060	UPPER STICK GUIDE P. 22,86	1
33	770062	LOWER STICK GUIDE P. 10,16	1
33	770064	LOWER STICK GUIDE P. 19,05	1
33	770065	LOWER STICK GUIDE P. 22,86	1
55	770066	SMALL COMPONENTS GUIDE	1