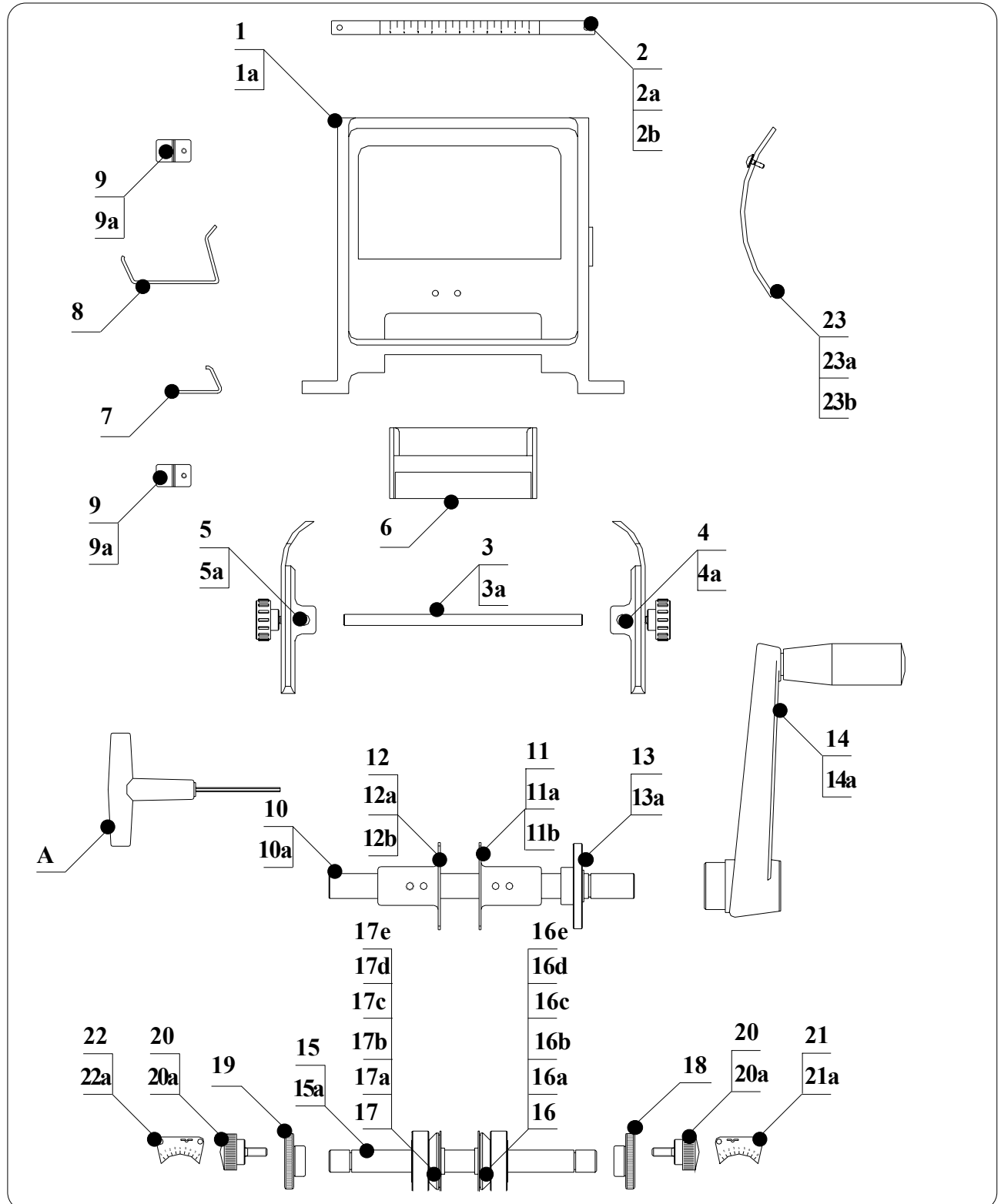


11 - SPARE PARTS

11.1 WARNING FOR THE CUSTOMER

Before ordering any particular spare part, it is always necessary to specify the serial number of the machine to which the part shall fit.

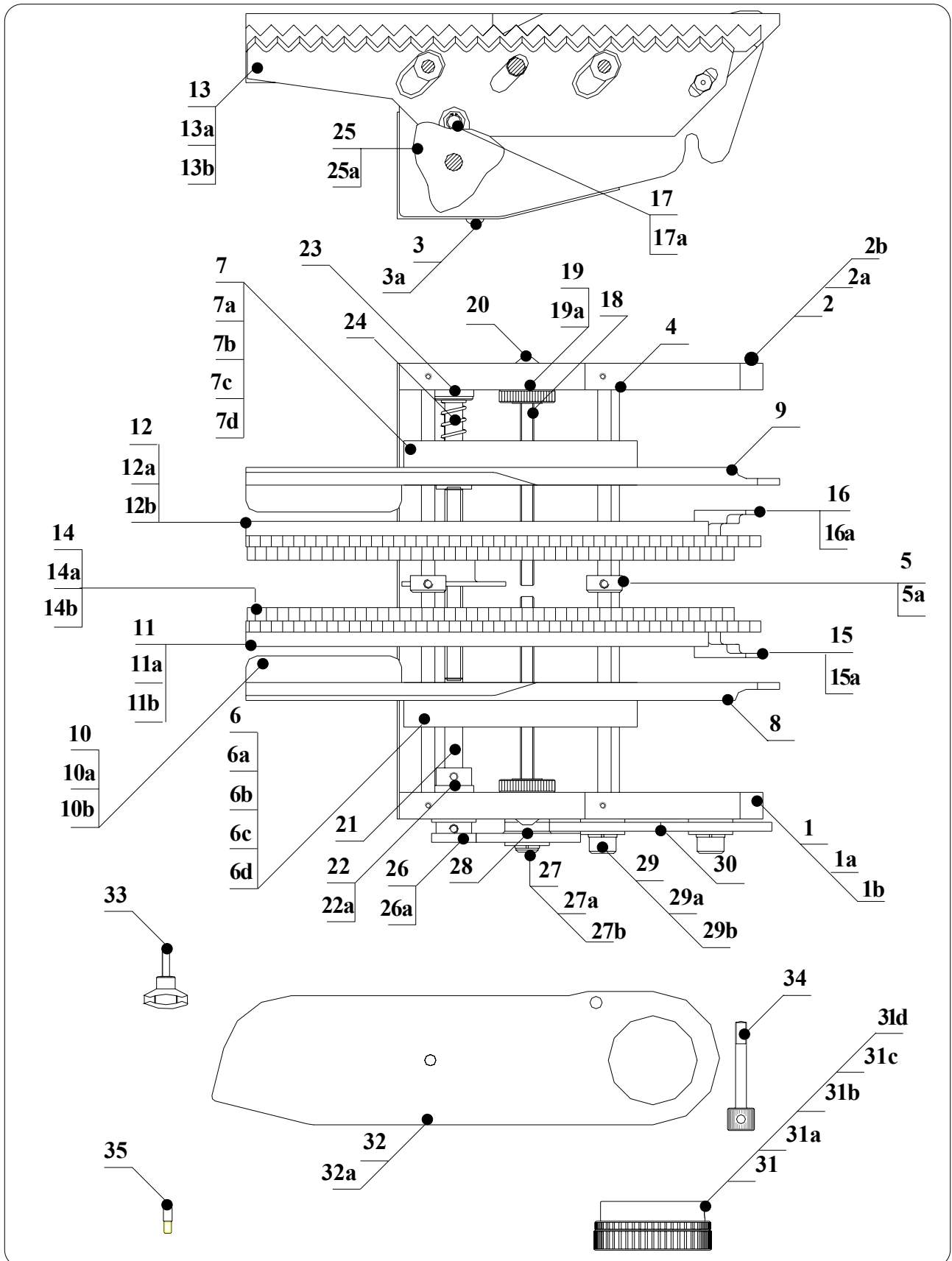
11.2 DETAILED DRAWING OF 25.OL01 TP6/S MANUAL CUTTING BENDING MACHINE FOR AX.COMPS.SURFACE MOUNTING H=2,5 B=2



11.2.1 READING KEY FOR DETAILED DRAWING 25.OL01 TP6/S MANUAL CUTTING BENDING MACHINE FOR AXIAL COMPONENTS SURFACE MOUNTING H=2,5 B=2

POS.	ITEM	DESCRIPTION	Q.TY
1	250101OL	MACHINE BODY TP6/S	1
1A	400111	CENTRAL BUSHING F18/22/12 FOR MAIN SHAFT	2
2	400108	CENTERING SCALE	1
2A	400115	CS SCREW M3X16	2
2B	950704	NUT M3	2
3	400207	GUIDE HOLDING SHAFT	1
3A	750301	CS SCREW M5X12	1
4	250201	RIGHT TAPE GUIDE FOR TP6/S	1
4A	400210	KNOB M5X16	1
5	250202	LEFT TAPE GUIDE FOR TP6/S	1
5A	400210	KNOB M5X16	1
6	400801	PART BIN	1
7	250113	UPPER COMPONENT UNLOADER	1
8	250114	LOWER COMPONENT UNLOADER	1
9	400112	COMPONENT UNLOADER HOLDER	2
9A	400117	SCREW TCEI M4X10	4
10	400401	MAIN SHAFT TP6/PR-B/S/R-CP/V	1
10A	400415	CLIP RS 15 DIN 6799	1
11	250407	RIGHT INNER TOOTHED DISC	1
11A	400304	SCREW PT M6X8	1
11B	770055	PARALLEL PIN D. 5X8	1
12	250406	LEFT INNER TOOTHED DISC	1
12A	400304	SCREW PT M6X8	1
12B	770055	PARALLEL PIN D. 5X8	1
13	400303	GEAR Z39 FOR MAIN SHAFT	1
13A	400304	SCREW PT M6X8	1
14	400301	HAND CRANK	1
14A	400305	SCREW PP M6X10	1
15	400504	CUTTING SHAFT	1
15A	400503	CLIP RS 12 DIN 6799 FOR SHAFT Ø 16	2
16	250600	RGT CUTT. FORMING ASSEMBLY TP6/S	1
16A	250502	DEL RIN RING FOR CUTTING WHEEL TP6/S	1
16B	250503	CUTTING WHEEL BODY TP6/S	1
16C	250504	RIGHT TOOTHED DISC FOR CUTTING WHEEL TP6/S	1
16D	250506	BENDING WHEEL FOR CUTTING WHEEL TP6/S	1
16E	340112	SCREW TCEI M3X8 UNBRAKO	3
17	250650	LEFT CUTT. FORMING ASSEMBLY TP6/S	1
17A	250502	DEL RIN RING FOR CUTTING WHEEL	1
17B	250503	CUTTING WHEEL BODY TP6/S	1
17D	250505	LEFT TOOTHED DISC FOR CUTTING WHEEL TP6/S	1
17C	250506	BENDING WHEEL FOR CUTTING WHEEL TP6/S	1
17E	340112	SCREW TBEI M4X6	3
18	400511	RIGHT ECCENTRIC BUSHING/PREFORM ADJ.	1
19	400502	LEFT ECCENTRIC BUSHING/PREFORM ADJ.	1
20	400501	KNOB M6X16	2
20A	750505	BLUED WASHER HOLE D. 6	2
21	400104	RIGHT ECCENTRIC SCALE/PREF. REF.	1
21A	600050	SCREW TBEI M4X6	2
22	400105	LEFT ECCENTRIC SCALE/PREF. REF.	1
22A	600050	VITE TBEI M4X6	2
23	400150	COMPLETE SAFETY COVER	1
23A	400110	SAFETY COVER	1
23B	400109	SAFETY COVER PIN	2
ADJUSTMENT TOOLSET			
A	400804	ALLEN KEY MM. 3	1

11.3 DETAILED DRAWING OF 51.0100 CS10 FEEDER FOR LOOSE COMPONENTS FOR TP6*PR-B*TP6/S* MACHINE

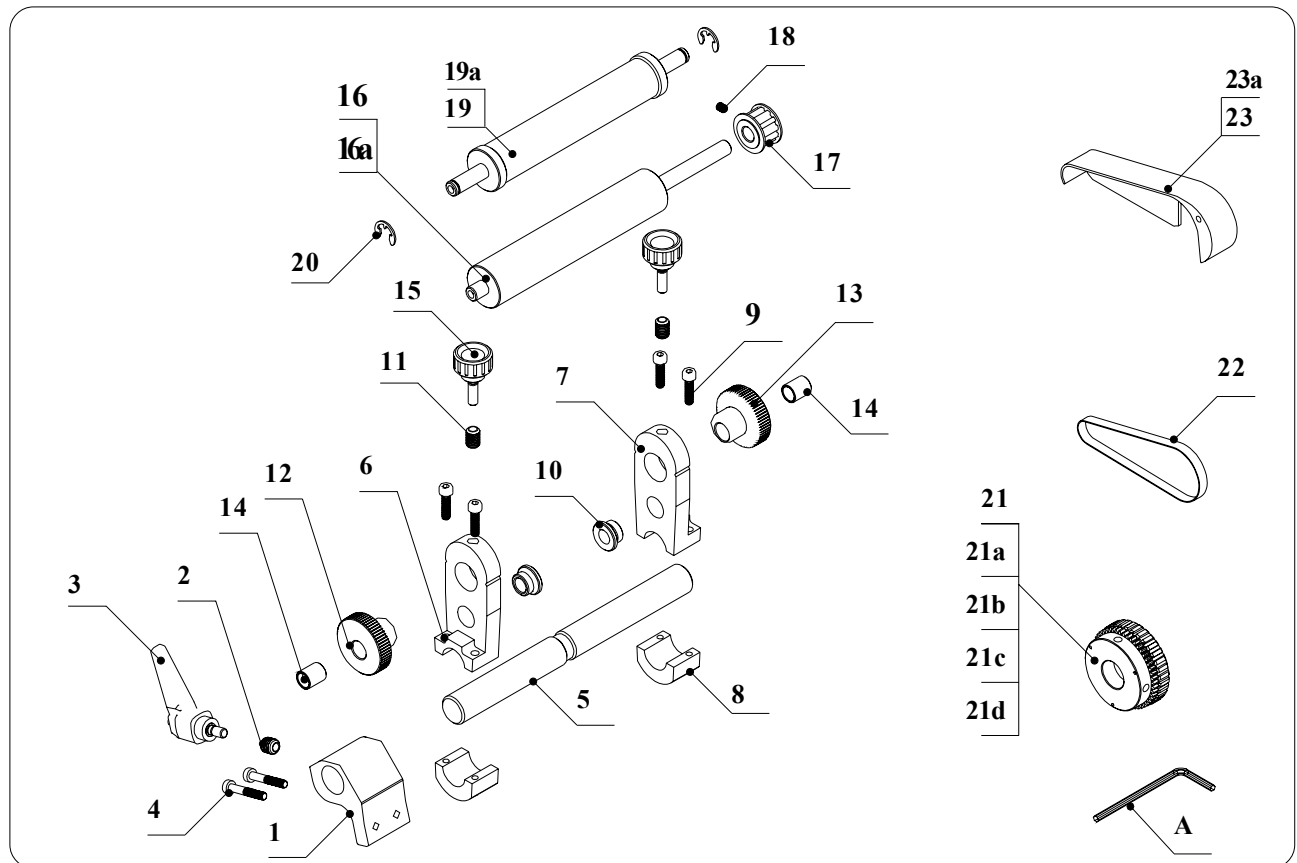


11.3.1 READING KEY FOR DETAILED DRAWING OF 51.0100 CS10 FEEDER FOR LOOSE COMPONENTS FOR TP6*PR-B*TP6/S* MACHINE

POS.	ITEM	DESCRIPTION	Q.TY
1	510001	COMPLETE RIGHT SIDE HOLDER	1
1A	510017	BUSHING F8/14/14 C 3	1
1B	500065	SCREW PCO M 4X5 UNBRAKO	3
2	510015	COMPLETE LEFT SIDE HOLDER	1
2A	510042	COLLARED BUSHING DIN 172	1
2B	500065	SCREW PCO M 4X5 UNBRAKO	3
3	510041	MAIN SHAFT PROTECTION	1
3A	500070	SCREW TBEI M 5X8	2
4	510043	SLIDING SHAFT	2
5	510052	RING	2
5A	510059	SCREW M 4X3	2
6	510018	RIGHT COMPONENT GUIDE BODY	1
6A	510023	SCISSOR SPRING	2
6B	600026	BLUED NUT M 5	2
6C	400017	SCREW TCEI M 4X10 UNBRAKO	1
6D	600027	SCREW TCEI M 4X15 UNBRAKO	1
7	510019	LEFTT COMPONENT GUIDE BODY	1
7A	510023	SCISSOR SPRING	2
7B	600026	BLUED NUT M 5	2
7C	400017	SCREW TCEI M 4X10 UNBRAKO	1
7D	600027	SCREW TCEI M 4X15 UNBRAKO	1
8	510035	RIGHT COMPONENT GUIDE	1
9	510034	LEFT COMPONENT GUIDE	1
10	510020	TAB FOR LOADING AREA	2
10A	600050	SCREW TBEI M 4X6	4
10B	950308	WASHER D4	4
11	510010	RIGHT STATIONARY STAIR	1
11A	500018	WASHER PP M 4X4 UNBRAKO	2
11B	900003	THREADED ENSAT BUSHING M 9/ M 6X12	1
12	510014	LEFT STATIONARY STAIR	1
12A	500018	SCREW PP M 4X4 UNBRAKO	2
12B	900003	THREADED ENSAT BUSHING M 9/ M 6X12	1
13	510011	RIGHT MOVING STAIR	1
13A	510042	COLLARED BUSHING DIN 172	2
13B	510053	NEEDLE BEARING FOR LIFTING PIN SKF HK0609	1
14	510013	LEFT MOVING STAIRS	1
14A	510042	COLLARED BUSHING DIN 172	2
14B	510053	NEEDLE BEARING FOR LIFTING PIN SKF HK0609	1
15	500042	RIGHT MOVING TAB	1
15A	500066	SCREW TC M 5X8 REDUCED UNBRAKO	1

POS.	ITEM	DESCRIPTION	Q.TY
16	500045	LEFT MOVING TAB	1
16A	500066	SCREW TC M 5X8 REDUCED UNBRAKO	1
17	500050	LIFTING PIN	1
17A	500026	STOP CLIP Ø 6	2
18	510008	M6 THREADED SHAFT L/R STAIRS/COMP.LENGTH	2
19	500039	KNURLED WHEEL DIN 467 M 6-A	2
19A	510049	SCREW PCO M 4X8	2
20	510037	NUT M6	2
21	510009	MAIN SHAFT CAM HOLDER	1
22	510033	FIXING RING DIN 705	2
22A	500065	SCREW PCO M 4X5 UNBRAKO	2
23	510038	BREACH WASHER	3
24	510032	SPRING D12210 Ø 8.2 L=29.5	1
25	510012	MOTIONCAM	1
25A	850510	SCREW PP M 4X6	2
26	510007	GEAR Z 20 M1	1
26A	500018	SCREW PP M 4X4 UNBRAKO	1
27	510004	PIN FOR FREE GEAR	1
27A	400214	SCREW TSEI M 5X16 UNBRAKO	1
27B	770069	RADIAL CLIP RS 7 DIN 6799	1
28	510006	GEAR Z 48/20 M1	1
29	510003	PIN FOR FREE GEAR	2
29A	400214	SCREW TSEI M 5X16 UNBRAKO	2
29B	510058	RADIAL CLIP RS 9 DIN 6799	2
30	510005	GEAR Z 50 M1	2
31	510002	TOOTHED DISC	1
31A	510056	TOOTHED PULLEY Z33 XL 037	1
31B	400512	SCREW TCEI M 3X12 UNBRAKO	3
31C	510057	GEAR Z50 M120D	1
31D	210119	SCREW PP M 6X12	2
32	510016	SAFETY COVER	1
32A	500070	SCREW TBEI M 5X8	2
33	510040	LEFTT KNOB	1
34	510054	RIGH T KNOB	1
35	510036	CENTERING PIN Ø 6 X H 9	2
FOR 51.0300 CS30 FEEDER FOR LOOSE COMPONENTS FOR TP6/V			
16	550002	LEFT MOVING TAB	1

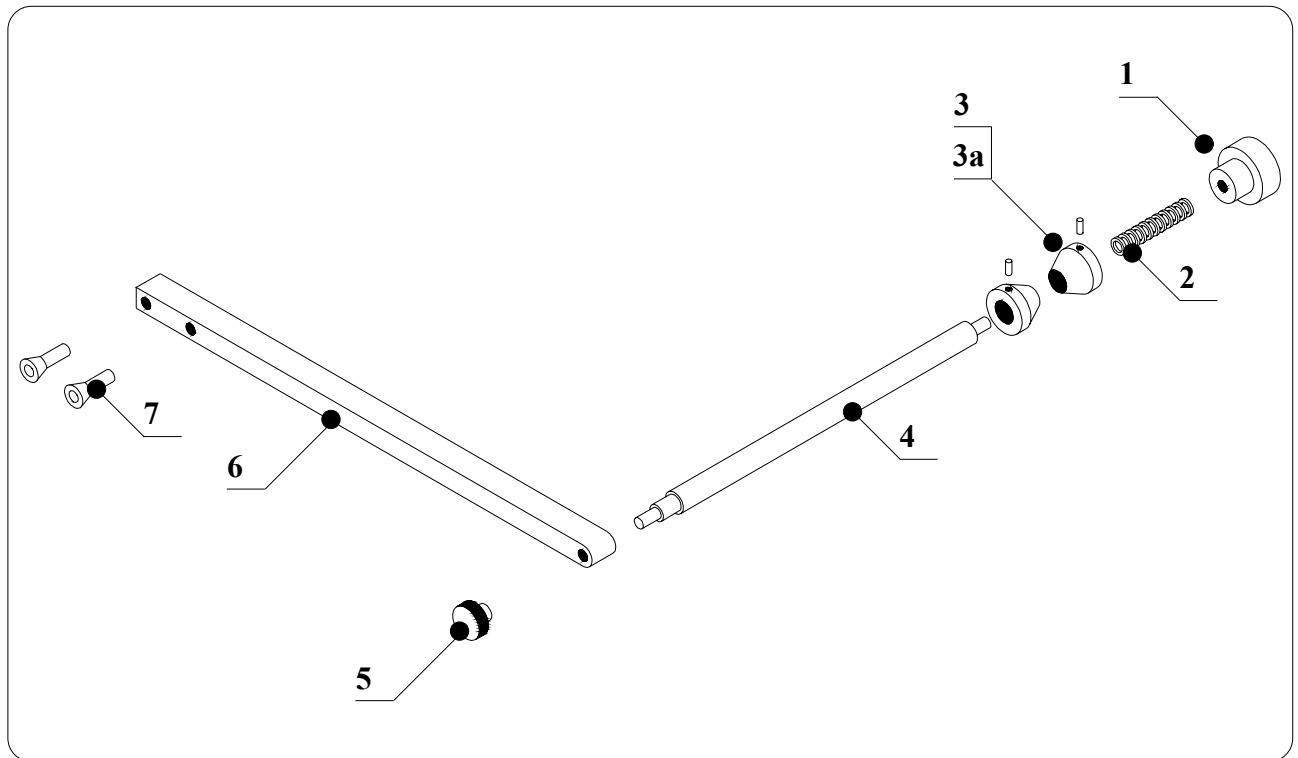
11.4 DETAILED DRAWING OF TNS/11 WASTE TAPE DRAWING ROLL SUITABLE 21.0011



11.4.1 READING KEY FOR DETAILED DRAWING OF TNS/11 WASTE TAPE DRAWING ROLL SUITABLE 21.0011

REF.	CODE	DESCRIPTION	Q.TY
1	210128	HOLDER FOR TNS SHAFT FOR TP6	1
2	740151	SELF LUBRICATING BUSHING M5 M8 X 1 X 7	1
3	850408	LOCKING HANDLE MR40 P M5 X 10	1
4	210136	SCREW TCEI M4 X 25	2
5	210129	TNS HOLDING SHAFT FOR TP6	1
6	210402	LEFT SIDE HOLDING LEVER	1
7	210410	RIGHT SIDE HOLDING LEVER	1
8	210401	FIXING RING FOR SIDE LEVER	2
9	930075	SCREW TCEI M4 X 20	4
10	210102	BUSHING F08/12/08	2
11	400211	ENSAT BUSHING M5/M8 X 10	2
12	210407	RIGHT ECCENTRIC	1
13	210408	LEFT ECCENTRIC	1
14	210409	GLYCODUR BUSHING Ø8 Ø10 h12	2
15	400210	NOB M5 X 16	2
16	210403	LOWER DRIVING SHAFT	1
16a	210406	LOWER ROLLER	1
17	500010	COMPLETE PULLEY Z11	1
18	500018	SCREW PP M4 X 4 UNBRAKO	1
19	210404	UPPER SHAFT	1
19a	210405	UPPER ROLLER	1
20	500016	CLIP Ø8	2
21	510002	TOOTHED WHEEL FOR FEEDERS AND TNS	1
21a	510056	TOOTHED PULLEY Z33 XL 037	1
21b	400512	TCEI SCREW M3 X 12 UNBRAKO	3
21c	510057	GEAR Z50 M1 FOR CS10-CS30-TNS	1
21d	210119	SCREW PP M6 X 12	2
22	550007	TOOTHED BELT 140 XL	1
23	210127	COMPLETE COVER FOR TNS FOR TP6	1
23a	210135	SCREW TBEI M5 X 40	1
A	130080	CHIAVE A BRUGOLA 3mm	1

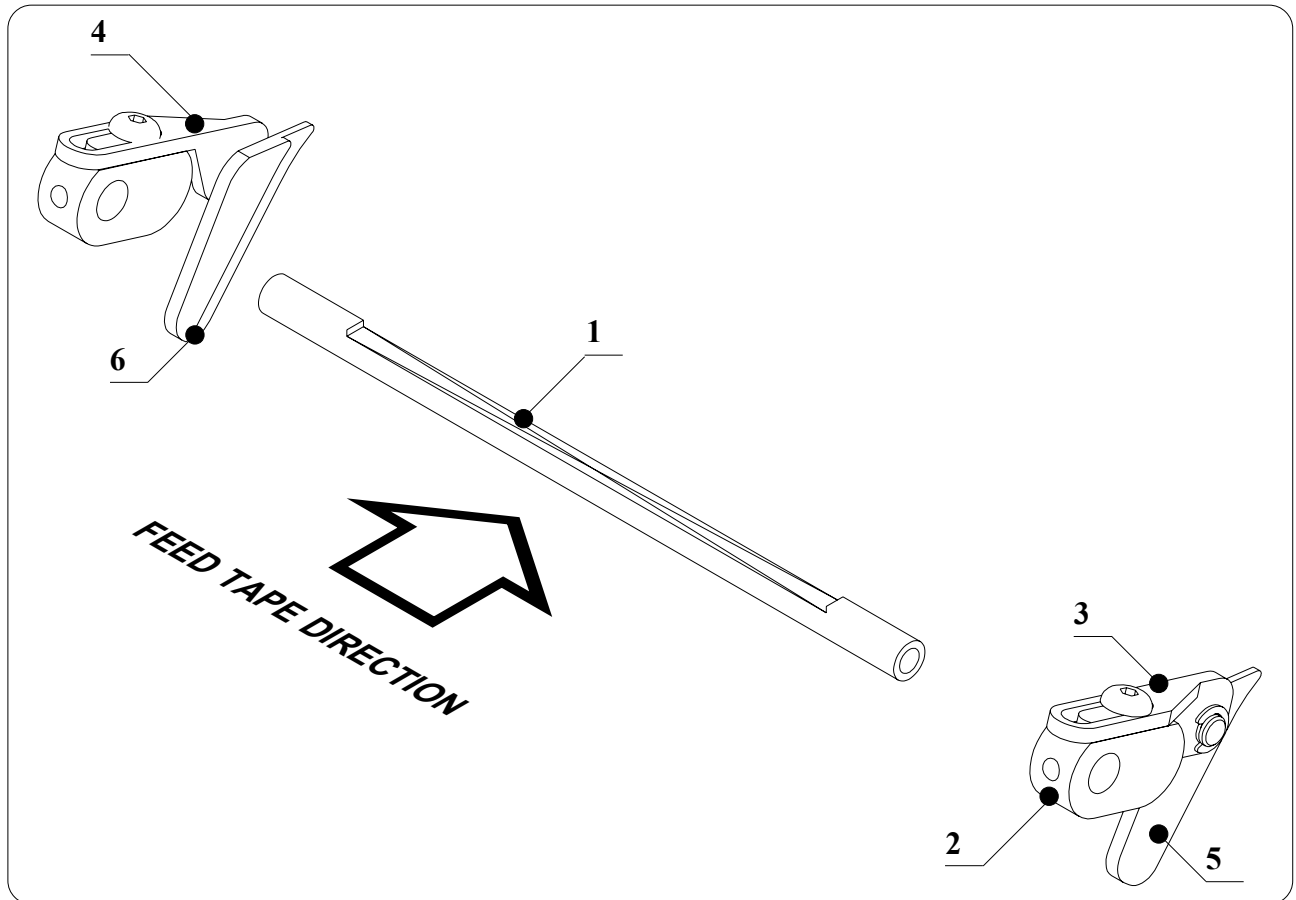
11.5 DETAILED DRAWING OF REEL HOLDER BR6 REEL HOLDER FOR TAPED COMPONENTS CODE 400200



11.5.1 READING KEY FOR DETAILED DRAWING OF BR6 REEL HOLDER FOR TAPED COMPONENTS CODE 400200

<i>POS.</i>	<i>ITEM</i>	<i>DESCRIPTION</i>	<i>Q.TY</i>
1	400206	KNOB M 12	1
2	400204	SPRING	1
3	400203	CENTERING CONE	2
3A	210119	SCREW PP M 6X12	2
4	400201	REEL HOLDER	1
5	400205	KNOB M 8	1
6	400202	BAR FOR REELHOLDER	1
7	400212	SCREW TSEI M 5X20	2

11.6 DETAILED DRAWING OF COMPLETE COMPONENT BODY GUIDE TP6/S CODE 250800



11.6.1 READING KEY FOR DETAILED DRAWING OF COMPLETE COMPONENT BODY GUIDE TP6/S CODE 250800

<i>POS.</i>	<i>ITEM</i>	<i>DESCRIPTION</i>	<i>Q.TY</i>
1	250808	COMPONENT GUIDE SHAFT TP6/S	1
2	250805	CENTERING GUIDE TP6/S	2
3	250806	RIGHT CENTERING LEVER TP6/S	1
4	250810	LEFT CENTERING LEVER TP6/S	1
5	250807	CENTERING GUIDE RIGHT LEAD TP6/S	1
6	250809	CENTERING GUIDE LEFT LEAD TP6/S	1