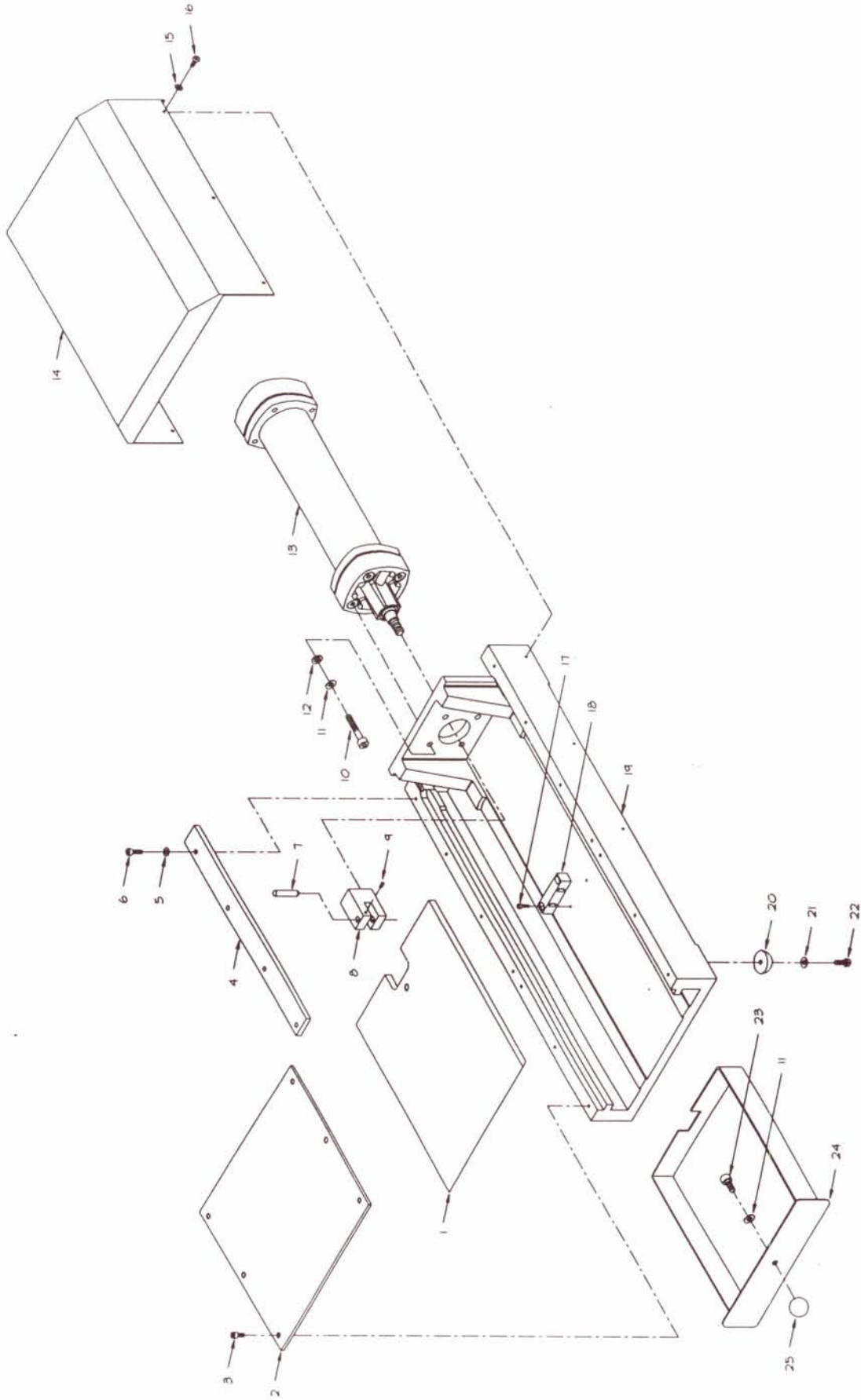


7.0 PARTS LIST:

Dwg #	Item #	Part Number	Description	Qty	Notes
40.0	1	T-C058-001	Cutting Blade	1	¹
40.0	2	T-C058-002	Standard Shear Plate - Blank (3.5mm)	1	
40.0	3	P-C058-013	DIN 912 4x8 Socket Head Cap Screw	6	
40.0	4	P-C058-002	Retaining Plate	2	
40.0	5	P-C058-014	DIN 125 M4 Flat Washer	8	
40.0	6	P-C058-008	DIN 912 4x12 Socket Head Cap Screw	8	
40.0	7	P-C058-015	DIN 6325H 6x30 Dowel Pin	1	
40.0	8	P-C058-001	Coupling Block	1	
40.0	9	P-C058-016	DIN 913 3x8 Flat Point Socket Set Screw	1	
40.0	10	P-C058-017	DIN 912 6x35 Socket Head Cap Screw	4	
40.0	11	P-C058-018	DIN 127-B M6 Lock Washer	5	
40.0	12	P-C058-019	DIN 125 M6 Flat Washer	4	
40.0	13	P-C058-003	Cylinder (DC-50-200-PV)	1	
40.0	14	P-C058-004	Machine Cover	1	
40.0	15	P-C058-026	DIN 125 M3 Flat Washer	6	
40.0	16	P-C058-020	DIN 85 3x6 Pan Head Machine Screw	6	
40.0	17	P-C058-021	DIN 912 3x12 Socket Head Cap Screw	2	
40.0	18	P-C058-007	Scrap Tray Magnet	2	
40.0	19	P-C058-022	Machine Base Casting	1	
40.0	20	P-C058-006	Rubber Foot	4	
40.0	21	P-C058-023	DIN 125 M5 Flat Washer	4	
40.0	22	P-C058-009	DIN 85 5x12 Pan Head Machine Screw	4	
40.0	23	P-C058-024	DIN 912 6x10 Socket Head Cap Screw	1	
40.0	24	P-C058-005	Scrap Tray	1	
40.0	25	P-C058-025	Plastic Knob	1	
		P-C058-012	Foot Guard (4500 FH)		
		P-C058-011	Foot Pedal (F-5-¼B)		

¹ Denotes Recommended Spare Part



NOTES:
 1. SOME ITEMS MAY BE REMOVED FOR CLARITY
 2. SOME MODELS MAY VARY FROM ILLUSTRATION AS SHOWN

 Streckfuss USA, Inc.	TITLE				PARTS IDENTIFICATION DRAWING				MODEL NO.	COSB	DATE	DATE	REV	SHEET	
										A. SPRINGER					40.0