

V. PREVENTIVE MAINTENANCE:

- Daily - Remove all scrap leads from the machine with a brush or a light blast of air.
- Weekly - Apply a light amount of 10w oil to the pitch and cut length adjustment shafts and the linear bearings and guide shafts. Check for wear.
- Monthly - Disassemble the machine completely and clean all items thoroughly. Inspect for wear and relubricate.

VI. PARTS LIST:

Item No.	Description	Part No.	Qty
1	Cutting Die Set (10mm)	T-C034-001	1
	Cutting Die Set (16mm)	T-C034-002	
2	Shear Block Set	T-C034-003	1
3	Bending Die Set (SL)	T-C034-004	1
	Bending Die Set (MTL)	T-C034-010	
	Bending Die Set (S)	T-C034-006	
4	Clamping Die Set (MTL)	T-C034-008	1
	Clamping Die Set (S)	T-C034-009	
5	Bending Anvil Set (MTL)	T-C034-005	1
	Bending Anvil Set (S)	T-C034-007	
6	Ejector Blade Set	P-C034-008	1
7	Linear Bearing (8mmx40mm)	P-C034-012	2
	Linear Bearing (8mmx80mm)	P-C034-058	
8	Linear Bearing (6mmx25mm)	P-C034-013	2
9	Cut Length Adjustment Screw	P-C034-014	2
10	Cutting Die Spring	P-C034-017	2
11	Cut Length Return Spring	P-C034-018	2
12	Bending Anvil Spring	P-C034-024	2
13	Pitch Adjustment Index Spring	P-C034-025	1
14	Spanner Adjustment Screw	P-C034-026	2
15	Cut Length Adjustment Knob	P-C034-037	2
16	Bushing	P-C034-028	2
17	Bushing	P-C034-029	2
18	Guide Shaft (8mmx150mm)	P-C034-030	2
	Guide Shaft (8mmx215mm)	P-C034-054	
19	Pitch Adjustment Knob	P-C034-031	1
20	Rubber Foot	P-C034-032	4

VI. PARTS LIST: (con't)

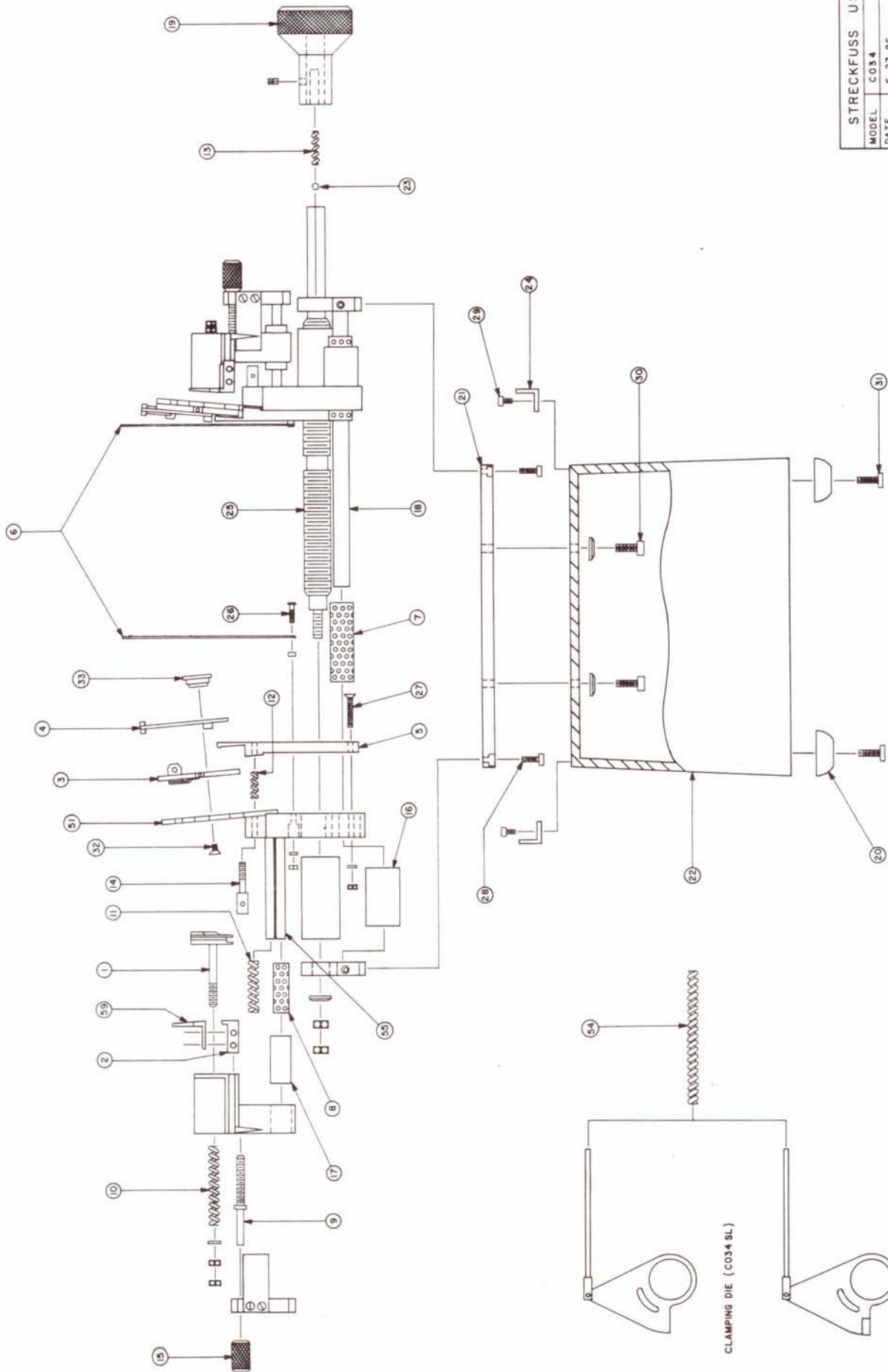
Item No.	Description	Part No.	Qty
21	Tooling Base Plate (150mm)	P-C034-033	1
	Tooling Base Plate (215mm)	P-C034-056	
22	Machine Base	P-C034-034	1
23	Steel Ball (3.5mm)	P-C034-035	1
24	Hood Mounting Set (Short)	P-C034-036	1
	Hood Mounting Set (Long)	P-C034-069	
25	Pitch Adjustment Shaft (Short)	P-C034-027	1
	Pitch Adjustment Shaft (Long)	P-C034-070	
26	Ejector Pivot Screw (MTL)	P-C034-009	2
	Ejector Pivot Screw (S)	P-C034-023	
27	M3x20mm FHMS	P-C034-045	2
28	M4x12mm SHCS	P-C034-046	4
29	M4x5mm SHCS	P-C034-047	5
30	M5x10mm SHCS	P-C034-048	2
31	M4x10mm SHCS	P-C034-049	6
32	M3x5mm SFHMS	P-C034-050	4
33	Shoulder Disk (SL)	P-C034-038	2
	Shoulder Disk (S)	P-C034-066	
	Shoulder Disk (MTL)	P-C034-067	
34	Ejector Bow (Short)	P-C034-006	1
	Ejector Bow (Long)	P-C034-007	
35	Ejector Bow Spring	P-C034-020	1
36	Ejector Bow Sleeve	P-C034-039	1
37	Ejector Bow Pivot Shaft	P-C034-040	1
38	Ejector Bow Mount	P-C034-041	1
39	Ejector Bow Foot	P-C034-011	1
40	Ejector Return Stop Assembly	P-C034-042	1
41	Ejector Return Spring	P-C034-019	1
42	Ejector Kick-Out Pad	P-C034-010	1
43	Drive Shaft Mount (AV-35-50)	P-C034-043	1
	Drive Shaft Mount (DGS-25-50)	P-C034-068	
44	Drive Shaft (6mmx100mm)	P-C034-004	1
	Drive Shaft (6mmx165mm)	P-C034-005	
45	Air Cylinder (AV-35-50)	P-C034-001	1
	Air Cylinder (DGS-25-50)	P-C034-061	
46	Air Cylinder Nut (M24x1.5)	P-C034-071	1
47	Air Cylinder Washer (M24)	P-C034-059	1
48	M3x10mm SHCS	P-C034-051	2
49	M3x5mm SSS	P-C034-052	1
50	M4x20mm SHCS	P-C034-053	1

VI. PARTS LIST: (con't)

Item No.	Description	Part No.	Qty
51	Clamping / Bending Die Mounting Plate Set	P-C034-060	1
52	M4x35mm SHCS	P-C034-055	2
53	Needle Valve (GR-1/8)	P-C034-044	2
54	Clamping Die Spring	P-C034-016	2
55	Cut Length Guide Shaft	P-C034-065	4
56	M3x5mm SHCS	P-C034-057	4
57	Plexiglass Hood (Short)	P-C034-021	1
58	Plexiglass Hood (Long)	P-C034-022	1
59	Finger Guard Set	T-C034-011	1

Items Not Shown:

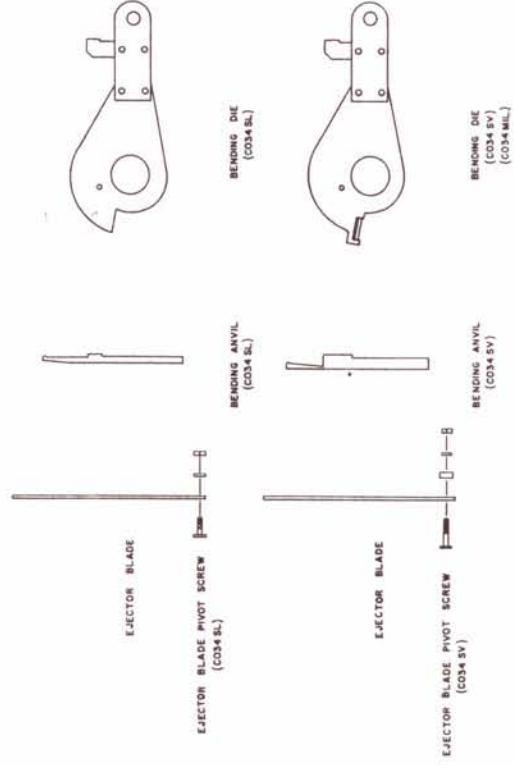
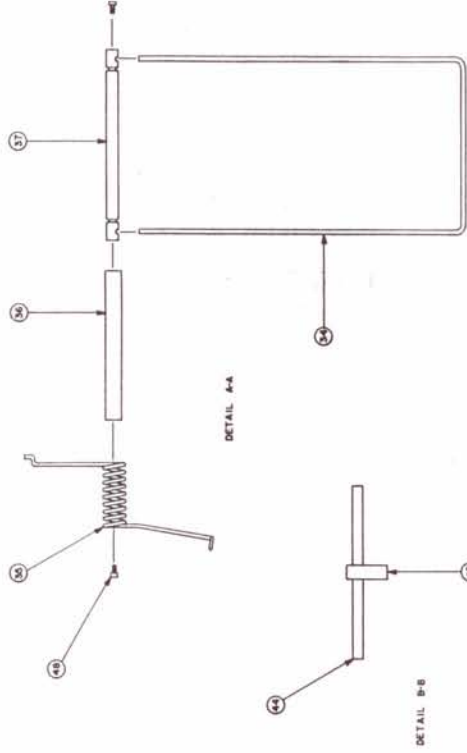
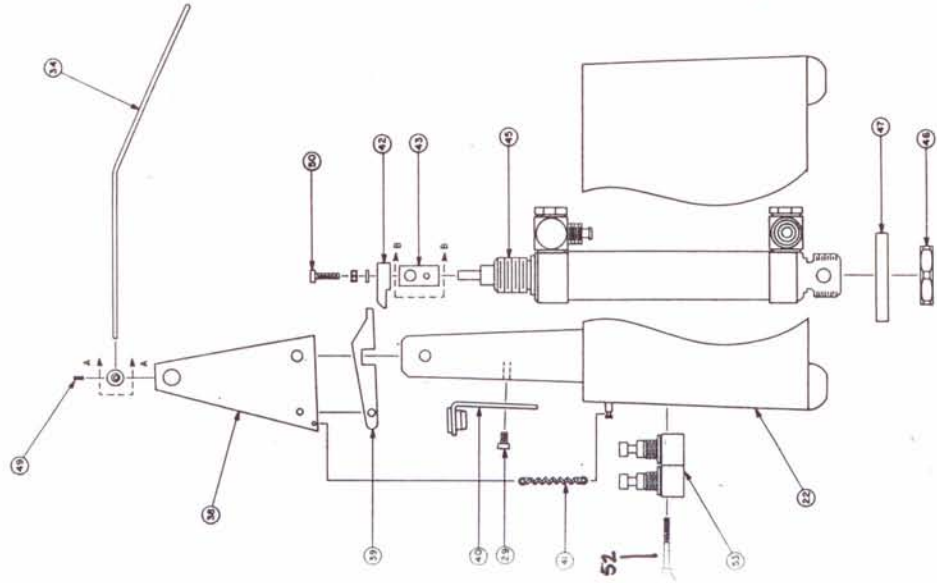
Description	Part No.	Qty
Air Cylinder Piston (AV-35-50)	P-C034-002	1
Air Cylinder Spring Set	P-C034-003	1
Complete Spring Set	P-C034-015	1
Pitch Adjustment Scale & Mount	P-C034-062	1
Cut Length Adjustment Scale & Mount Set	P-C034-063	1
Foot Pedal (F-5-1/4B)	P-C034-064	1



STRECKFUSS USA	
MODEL	C034
DATE	6-27-86
SCALE	NONE
DWR. NO.	51
DR BY	R. VITOVSKY
REVISED	4-2-90

CLAMPING DIE (C034 SL)

CLAMPING DIE (C034 SV)



STRECKFUSS USA	
MODEL	C034
DATE	6-27-86
SCALE	NONE
DWR NO.	52
DR BY	RY
REVISED	4-2-90