

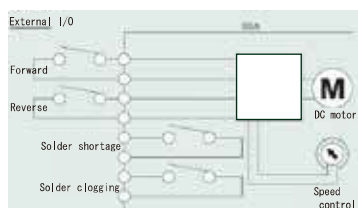
SSA

Solder Feeder for Automation Equipment SSA

The solder can be fed forward or reverse and controlled by an external I/O controller. If used to control the solder liquid surface level, it automatically keeps the level constant. In addition, it can be attached to the equipment as a feeder of an automatic soldering system.



External I/O



Type	SSA
Power	AC100V / AC220V 50/60Hz
Using Motor	DC motor 5 Watt
Solder Diameter	φ0.4~2.0mm
Solder Feed	External control (high / Low)
Solder Feed Speed	10~30mm/sec.
Solder Feed Reverse	External control (30mm/sec.)
Sensor	clogged / shortage sensor
External Control	Available
Weight	Approx. 2kg
Accessories	I/O Connector, External Power Supply Connector, Power Cable
Option	Solder Wire Feeding Tube

SSB

Iron Unit with Solder Feeder SSB

This integral unit will increase efficiency of manual solder work. Handling the iron unit and feeding the solder are two actions that can be done with one hand. The solder wire feed length is controlled with a timer which provides good soldering quality. There are two options of iron units. The pistol type or pencil type. In addition there are more than 20 different types of iron tips available.



AM Iron Unit (Hand Gun Type)
Feeding Tube Type: TU*. *-***V
Solder Wire Diameter Total Length



PM-S Iron Unit (Pencil Type)
Feeding Tube Type: TU*. *-***S
Solder Wire Diameter Total Length



PM-L Iron Unit (Pencil Type)
Feeding Tube Type: TU*. *-***L
Solder Wire Diameter Total Length

	Heater Type	Iron Tip
60W	C-60-6	AS-6**
100W	SA-100W	AS-8**
150W	SA-150W	AS-10**



Iron Unit Stand: AK-1 (Option)

Type	SSB
Power	AC100V 50/60Hz
Using Motor	DC motor 5 Watt
Thermostat	Vari-tap type
Solder Diameter	0.4~2.0mm
Solder Feed	1 Pulse timer / Continuous
Solder Feed Speed	10~30mm/sec.
Solder Feed Reverse	N/A
Weight	Approx. 2kg
Constitution	Solder Wire feeder, Iron Unit, Iron Tip, Power Cable
Options	Iron Unit Stand (AK-1) Foot Switch (can be connected) Solder Wire Feeding Tube

ZSB-10 / 16

Zero Solder Ball Feeder

The ZSB feeder has a built-in roulette cutting blade which creates evenly spaced holes while precisely feeding solder wire. During soldering, the flux is released evenly through these holes which provides consistent flux coverage without spattering.



Type	ZSB-10/16
ZSB-10	0.4~1.0mm *(0.3mm Optional)
ZSB-16	1.2~1.6mm
Weight	1.5kg
Size(WxDxH)	190×85×80mm
Power consumption	45VA
Power	AC100~240V multi adaptor
Accessories	Foot Switch, Power Cable
Option	Solder Wire Feeding Tube

Solder Feeder for Automatic Soldering *LFD*

It can control feeding amount precisely by its pulse motor and the ZSB roller blade can be attached as an option.



Solder Feed Motor	Pulse motor
Solder Wire Diameter	φ0.4~1.6mm (Option:φ0.3mm)
Feed/Reverse Speed	0.1~50.0mm/sec.
Sensor	Clogged, Shortage
Weight	1.3kg

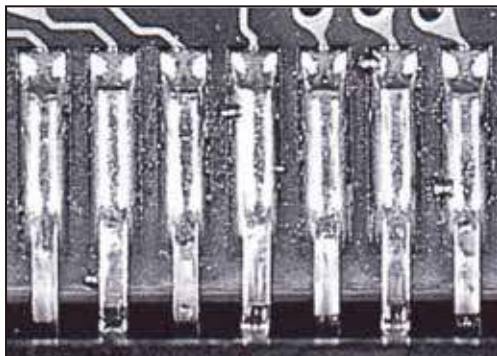


ZSB

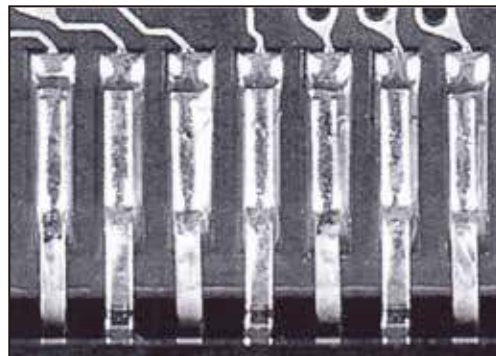
The built-in roulette cutting blade makes evenly spaced holes while precisely feeding solder wire. During soldering, flux is released evenly through these holes. This provides consistent flux coverage without spattering and allows solder to melt on a clean, active surface.



Comparison test results:

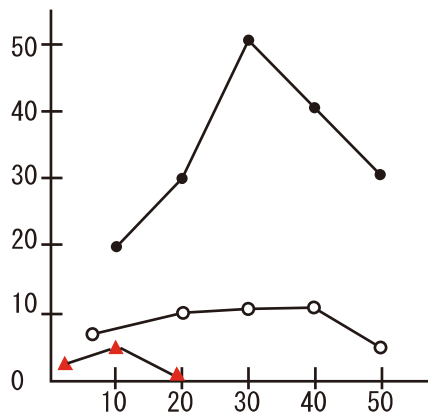


Solder ball spreading test without ZSB



Solder ball spreading test with ZSB

Test Results



- Normal (No cut)
- V cut
- ▲ ZSB-10

Comparison Test Conditions

Iron Temperature	350°C
Solder Feeding Spread	10mm/sec
Solder Feeding Quality	100mm
Solder Diameter	0.5mm (.020")
	Sn60%Pb40%
	2%Flux